

# MS. POWER POINT



Prepared by :  
**PRAGYA INSTITUTE OF  
IT & RESEARCH®**



+7268941266

[www.piitr.org](http://www.piitr.org) || [www.piitr.com](http://www.piitr.com)

Bahorikpur Heeraganj



## Table of Contents

---

About the Tutorial .....	i
Audience.....	i
Prerequisites.....	i
Copyright & Disclaimer .....	i
Table of Contents .....	ii
<b>1. PowerPoint 2010 – Getting Started.....</b>	<b>1</b>
<b>2. PowerPoint 2010 – Exploring Windows .....</b>	<b>4</b>
<b>3. PowerPoint 2010 - Backstage View .....</b>	<b>8</b>
Accessing Backstage View .....	8
Organization of Backstage View .....	9
<b>4. PowerPoint 2010 – Creating Presentation.....</b>	<b>11</b>
<b>5. PowerPoint 2010 – Adding New Slides.....</b>	<b>13</b>
<b>6. PowerPoint 2010 – Adding Text in Boxes .....</b>	<b>17</b>
<b>7. PowerPoint 2010 – Adding New Text Boxes .....</b>	<b>20</b>
<b>8. PowerPoint 2010 – Deleting Existing Slide .....</b>	<b>24</b>
<b>9. PowerPoint 2010 – Rearranging Slides .....</b>	<b>28</b>
Normal View .....	29
Slide Sorter View .....	31
<b>10. PowerPoint 2010 – Adding Slide Notes .....</b>	<b>33</b>
<b>11. PowerPoint 2010 – Managing Sections .....</b>	<b>38</b>
Creating Sections.....	38
Rearranging Sections.....	45
Deleting Sections.....	48
<b>12. PowerPoint 2010 – Working with Outlines .....</b>	<b>49</b>
<b>13. PowerPoint 2010 – Sidebars .....</b>	<b>52</b>
<b>14. PowerPoint 2010 – Presentation Views .....</b>	<b>56</b>
Normal View.....	57
Slide Sorter View .....	58
Reading View .....	59
Slideshow.....	60
<b>15. PowerPoint 2010 – Setting Backgrounds.....</b>	<b>61</b>
<b>16. PowerPoint 2010 – Slide Orientations.....</b>	<b>67</b>
<b>17. PowerPoint 2010 – Saving Presentation.....</b>	<b>68</b>



18. PowerPoint 2010 – Reviewing Presentation.....	72
19. PowerPoint 2010 – Adding Slide Numbers .....	74
20. PowerPoint 2010 – Adding Header & Footer.....	78
21. PowerPoint 2010 – Running Slideshow .....	82
22. PowerPoint 2010 – Keyboard Shortcuts .....	84
23. PowerPoint 2010 – Getting Context Help.....	87
<b>EDITING PRESENTATION .....</b>	<b>89</b>
24. PowerPoint 2010 – Copy & Paste Content .....	90
25. PowerPoint 2010 – Find & Replace Content.....	93
Finding Content .....	93
Replacing Content .....	95
26. PowerPoint 2010 – Undo Edited Changes .....	97
27. PowerPoint 2010 – Spell Check .....	100
28. PowerPoint 2010 – Content Translation.....	105
29. PowerPoint 2010 – Setting Language Type.....	108
30. PowerPoint 2010 – Duplicating Content .....	113
Cut-Paste Procedure.....	113
Copy-Paste Procedure .....	116
31. PowerPoint 2010 – Special Characters .....	118
32. PowerPoint 2010 – Slides Zoom In-Out.....	122
<b>FORMATTING PRESENTATION.....</b>	<b>125</b>
33. PowerPoint 2010 – Font Management.....	126
34. PowerPoint 2010 – Setting Text Fonts.....	129
35. PowerPoint 2010 – Text Decoration.....	133
36. PowerPoint 2010 – Changing Text Case .....	137
37. PowerPoint 2010 – Changing Text Size.....	140
38. PowerPoint 2010 – Changing Text Color .....	144
39. PowerPoint 2010 – Text Alignments .....	149

<b>40. PowerPoint 2010 – Indent Paragraphs .....</b>	<b>151</b>
<b>41. PowerPoint 2010 – Setting Line Spacing.....</b>	<b>154</b>
<b>42. PowerPoint 2010 – Borders and Shades.....</b>	<b>157</b>
Applying Borders .....	157
Applying Shades .....	160
<b>43. PowerPoint 2010 – Apply Formatting .....</b>	<b>163</b>
<b>44. PowerPoint 2010 – Using Slide Master.....</b>	<b>167</b>
<b>45. PowerPoint 2010 – Saving Design Template .....</b>	<b>172</b>
<b>WORKING WITH MULTIMEDIA.....</b>	<b>177</b>
<b>46. PowerPoint 2010 – Adding Pictures to Slide.....</b>	<b>178</b>
<b>47. PowerPoint 2010 – Editing Added Pictures .....</b>	<b>183</b>
Image Adjustments.....	184
Picture Styles .....	184
<b>48. PowerPoint 2010 – Formatting Added Pictures.....</b>	<b>185</b>
Picture Arrangement Features .....	186
Picture Sizing Features .....	187
<b>49. PowerPoint 2010 – Inserting a Screenshot .....</b>	<b>188</b>
<b>50. PowerPoint 2010 – Adding Shapes to Slide .....</b>	<b>192</b>
<b>51. PowerPoint 2010 – Editing Added Shapes.....</b>	<b>195</b>
Insert Shape Features.....	196
Shape Styles Features.....	196
<b>52. PowerPoint 2010 – Formatting Added Shapes .....</b>	<b>197</b>
Shape Arrangement Features.....	198
Shape Sizing Features.....	198
<b>53. PowerPoint 2010 – Adding Text to Shapes .....</b>	<b>199</b>
<b>54. PowerPoint 2010 – Arranging Shapes/Images.....</b>	<b>201</b>
<b>55. PowerPoint 2010 – Grouping/Ungrouping Objects .....</b>	<b>207</b>
<b>56. PowerPoint 2010 – Adding Audio &amp; Video .....</b>	<b>214</b>
<b>57. PowerPoint 2010 – Adding &amp; Formatting Tables .....</b>	<b>221</b>
Table Design Features .....	226
Table Format Features .....	229
<b>58. PowerPoint 2010 – Adding &amp; Formatting Charts .....</b>	<b>233</b>

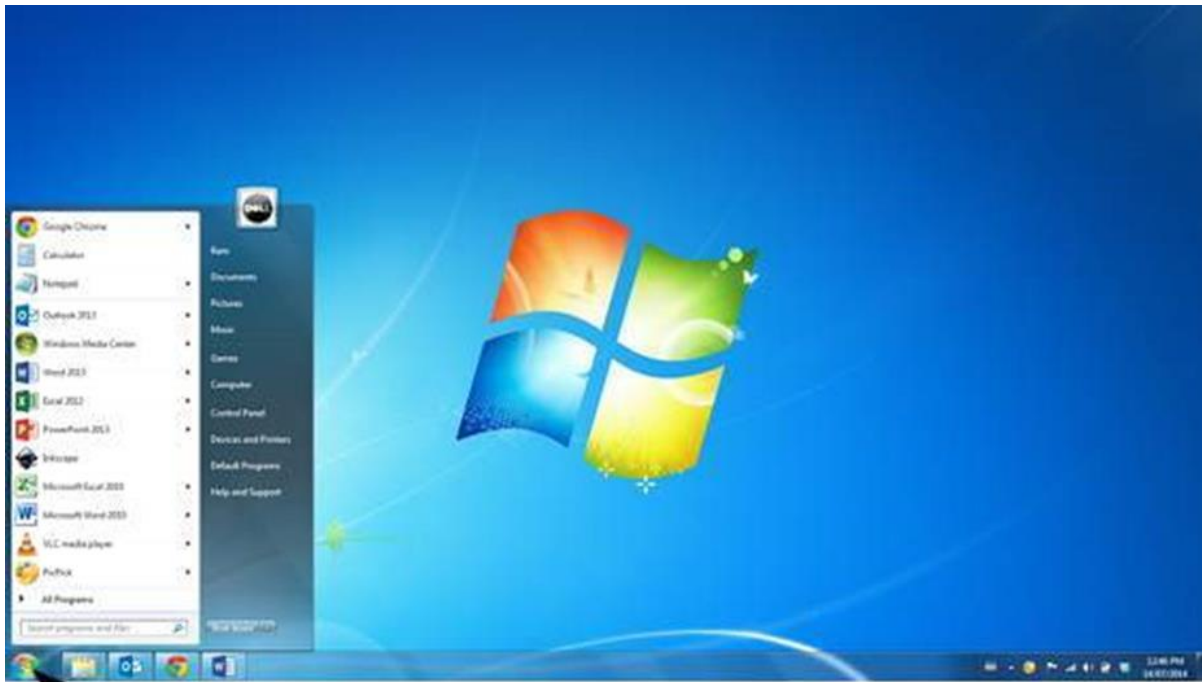


Chart Design Features .....	237
Chart Layout Features .....	239
Chart Format Features .....	242
<b>59. PowerPoint 2010 – Adding &amp; Formatting SmartArt.....</b>	<b>245</b>
SmartArt Design Features.....	249
SmartArt Format Features.....	252
<b>60. PowerPoint 2010 – Adding &amp; Previewing Animations .....</b>	<b>255</b>
<b>61. PowerPoint 2010 – Adding &amp; Previewing Transitions.....</b>	<b>261</b>
<b>SHARING PRESENTATION .....</b>	<b>265</b>
<b>62. PowerPoint 2010 – Creating a PDF File.....</b>	<b>266</b>
<b>63. PowerPoint 2010 – Creating a Video File.....</b>	<b>270</b>
<b>64. PowerPoint 2010 – Creating an Image File .....</b>	<b>275</b>
<b>65. PowerPoint 2010 – Printing Presentation .....</b>	<b>279</b>
<b>66. PowerPoint 2010 – Broadcasting Slideshow.....</b>	<b>281</b>
<b>67. PowerPoint 2010 – Packaging Presentation .....</b>	<b>285</b>
<b>68. PowerPoint 2010 – Setting Document Password.....</b>	<b>288</b>
<b>69. PowerPoint 2010 – Emailing Slideshow.....</b>	<b>292</b>

# 1. PowerPoint 2010 – Getting Started

In this chapter, we will understand how to get started with PowerPoint 2010. We will understand how to start PowerPoint 2010 application in simple steps. To access PowerPoint 2010, you must have Microsoft Office 2010 installed in your PC. Only Office 2010 Home and Student, Home and Business, Standard, Professional and Professional Plus packages have PowerPoint included in them. Other packages may have a viewer, but you cannot create presentations with them.

**Step 1:** Click the **Start** button.



**Start Button**

**Step 2:** Click **All Programs** option from the menu.



**All Programs**

**Step 3:** Search for **Microsoft Office** from the sub menu and click it.



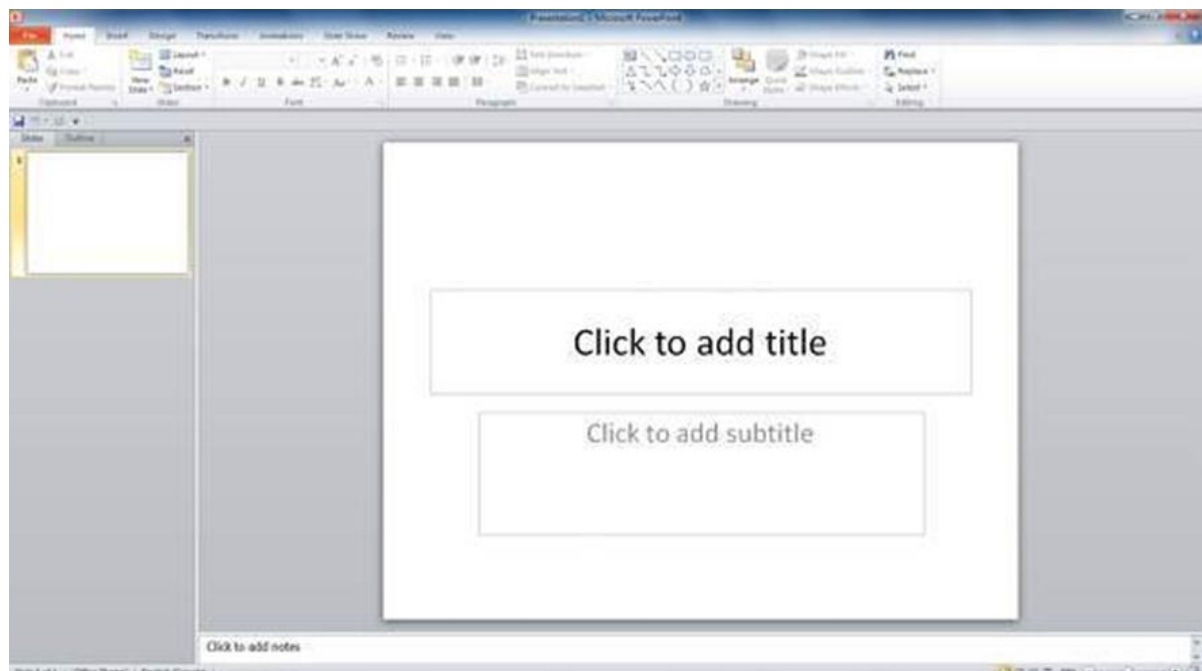
**Microsoft Office**

**Step 4:** Search for **Microsoft PowerPoint 2010** from the submenu and click it.



**Microsoft PowerPoint 2010**

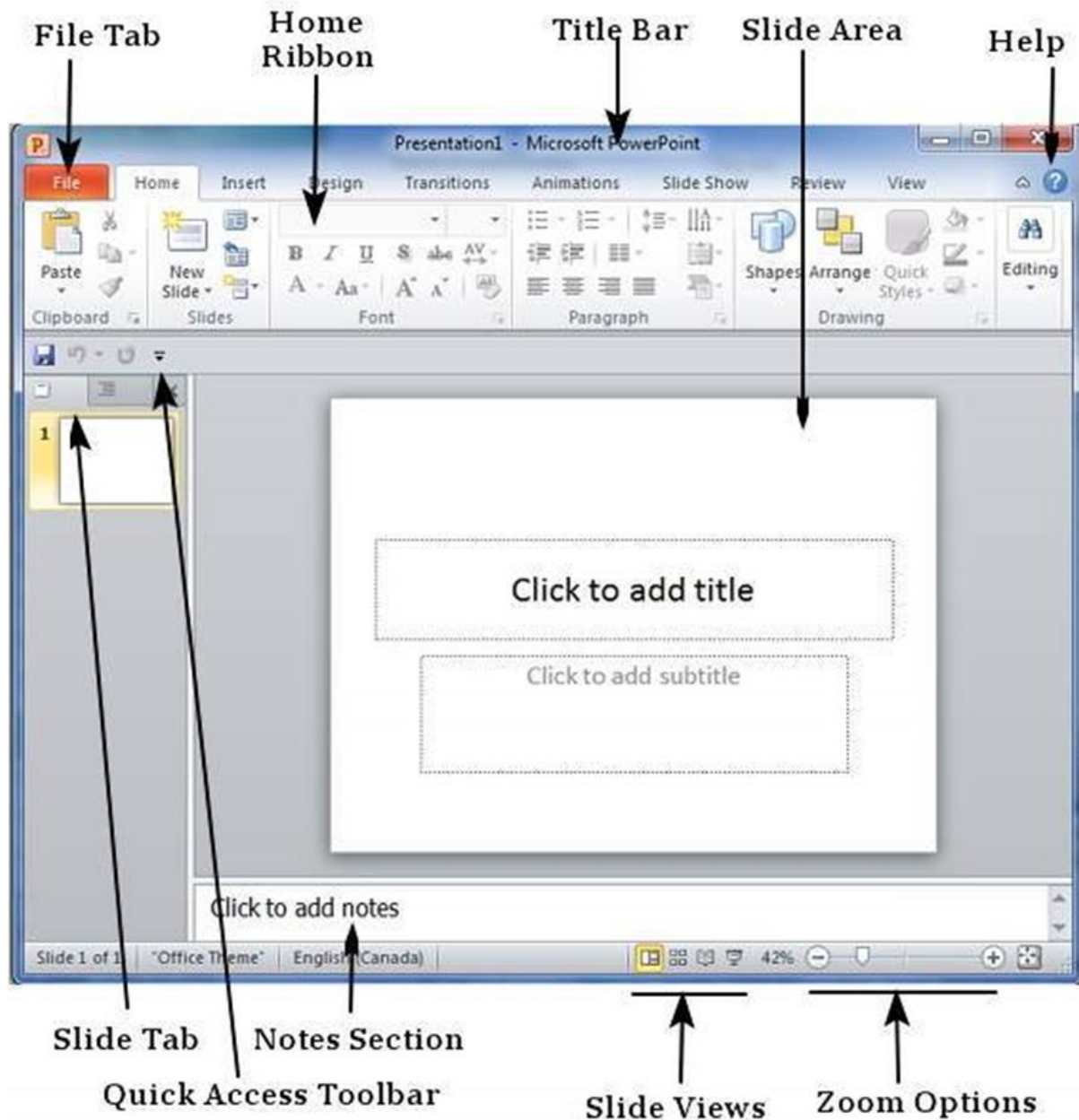
This will launch the Microsoft PowerPoint 2010 application and you will see the following presentation window.





## 2. PowerPoint 2010 – Exploring Windows

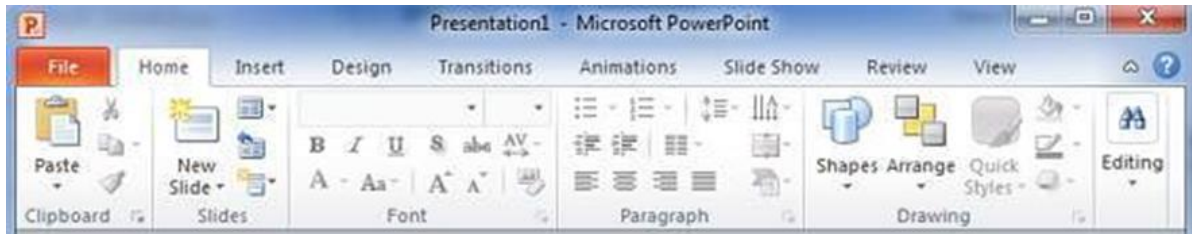
The following screenshot shows the various areas in a standard PowerPoint file. It is important to familiarize yourself with these areas as it makes learning and using PowerPoint easier.



## File Tab

This tab opens the **Backstage** view which basically allows you to manage the file and settings in PowerPoint. You can save presentations, open existing ones and create new presentations based on blank or predefined templates. The other file related operations can also be executed from this view.

## Ribbon



The ribbon contains three components:

- **Tabs:** They appear across the top of the Ribbon and contain groups of related commands. **Home, Insert, Page Layout** are examples of ribbon tabs.
- **Groups:** They organize related commands; each group name appears below the group on the Ribbon. For example, a group of commands related to fonts or a group of commands related to alignment, etc.
- **Commands:** Commands appear within each group as mentioned above.

## Title Bar

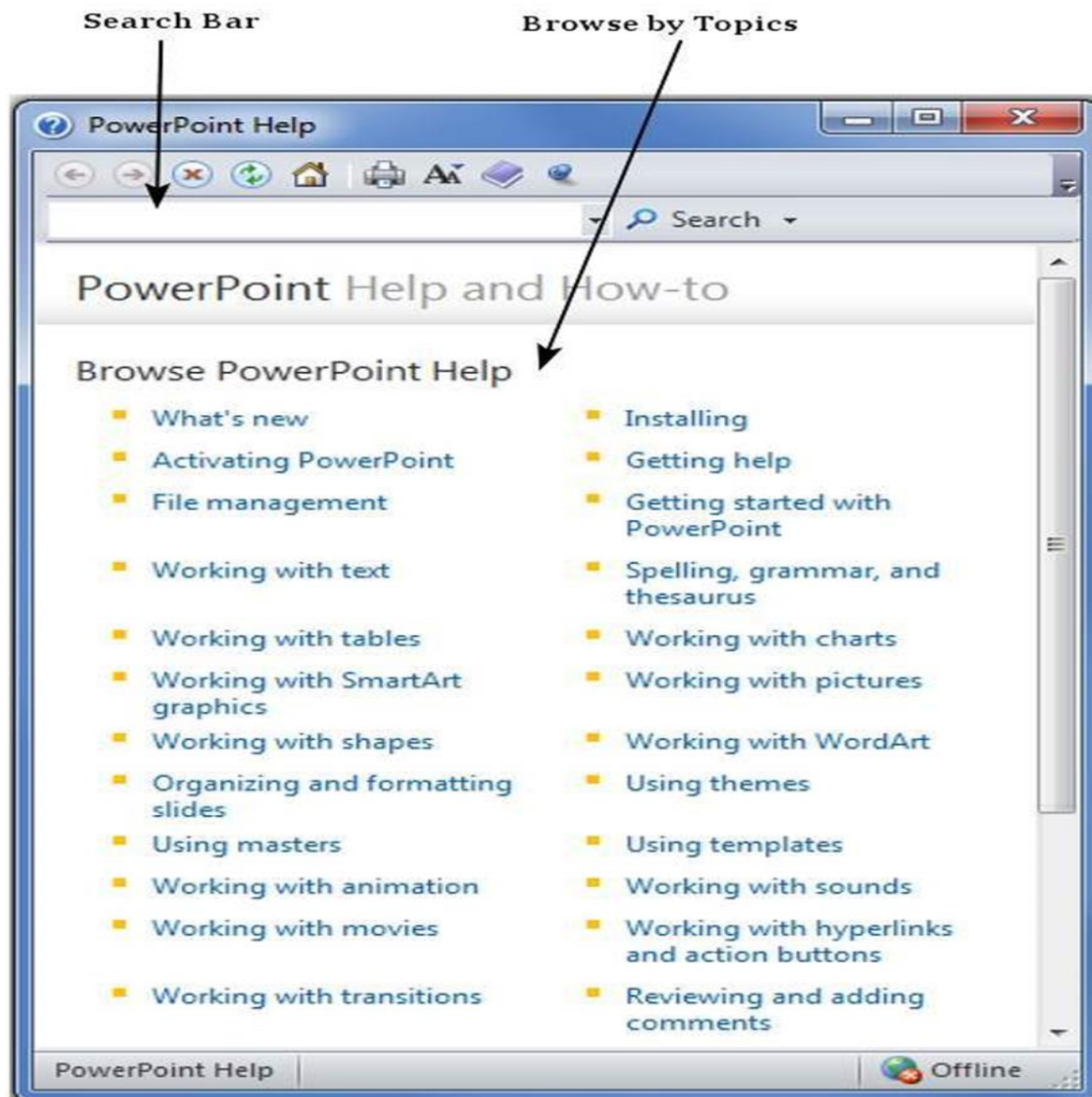
This is the top section of the window. It shows the name of the file followed by the name of the program which in this case is Microsoft PowerPoint.

## Slide Area

This is the area where the actual slide is created and edited. You can add, edit and delete text, images, shapes and multimedia in this section.

## Help

The Help Icon can be used to get PowerPoint related help anytime you need. Clicking on the "?" opens the PowerPoint Help window where you have a list of common topics to browse from. You can also search for specific topics from the search bar at the top.



## Zoom Options

The zoom control lets you zoom in for a closer look at your text. The zoom control consists of a slider that you can slide left or right to zoom in or out, you can click on the - and + buttons to increase or decrease the zoom factor. The maximum zoom supported by PowerPoint is 400% and the 100% is indicated by the mark in the middle.

## Slide Views

The group of four buttons located to the left of the Zoom control, near the bottom of the screen, lets you switch between PowerPoint views.

- **Normal Layout view:** This displays page in normal view with the slide on the right and a list of thumbnails to the left. This view allows you to edit individual slides and also rearrange them.
- **Slide Sorter view:** This displays all the slides as a matrix. This view only allows you to rearrange the slides but not edit the contents of each slide.
- **Reading View:** This view is like a slideshow with access to the Windows task bar in case you need to switch windows. However, like the slideshow you cannot edit anything in this view.

## Notes Section

This sections allows you to add notes for the presentation. These notes will not be displayed on the screen during the presentation; these are just quick reference for the presenter.

## Quick Access Toolbar

The Quick Access Toolbar is located just under the ribbon. This toolbar offers a convenient place to group the most commonly used commands in PowerPoint. You can customize this toolbar to suit your needs.

## Slide Tab

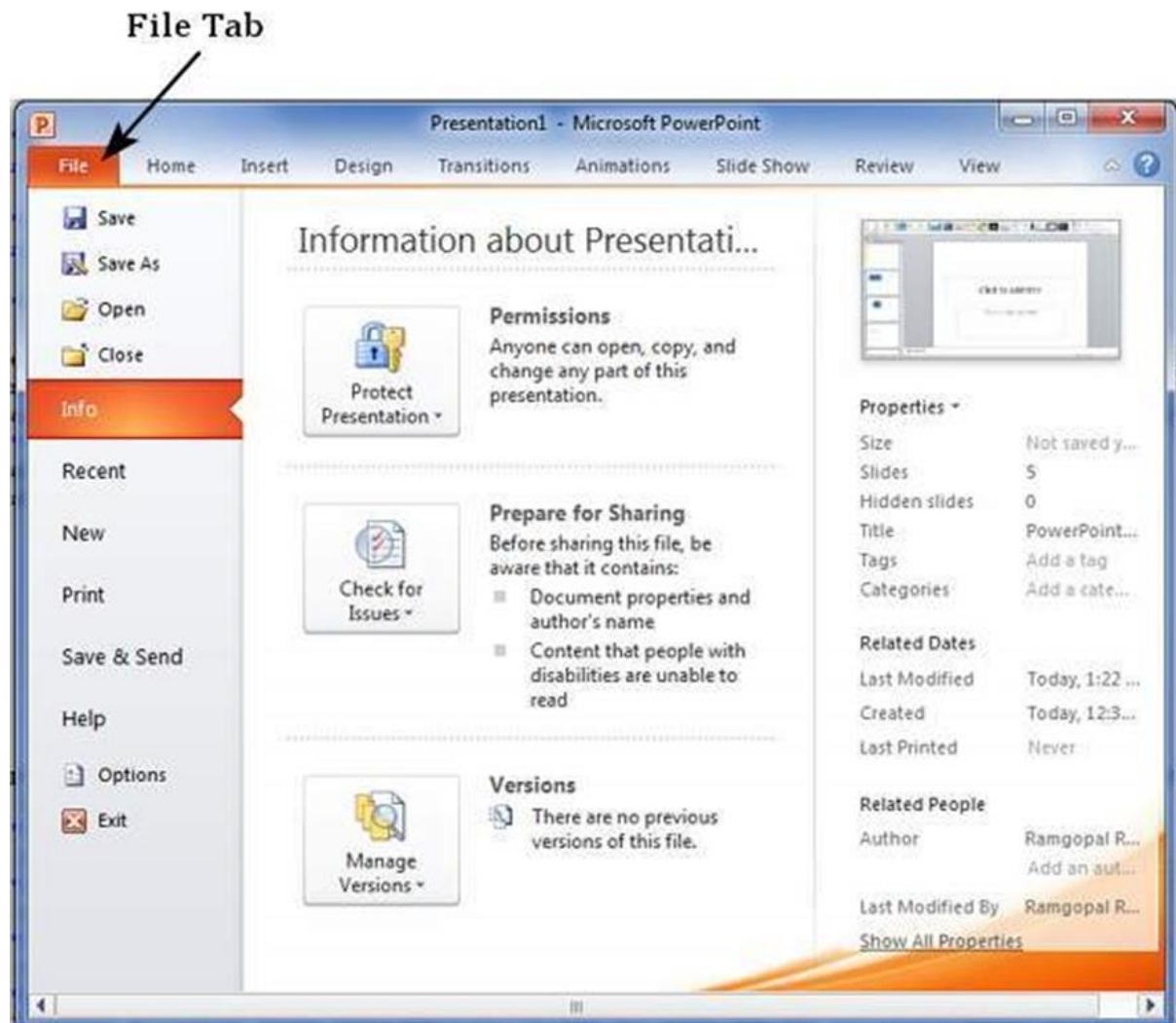
This section is available only in the Normal view. It displays all the slides in sequence. You can **add**, **delete** and **reorder** slides from this section.

## 3. PowerPoint 2010 - Backstage View

In Office 2010, Microsoft replaced the traditional file menu with the new **Backstage** view. This view not only offers all the menu items under the file menu, but additional details which makes management of your files a lot easier.

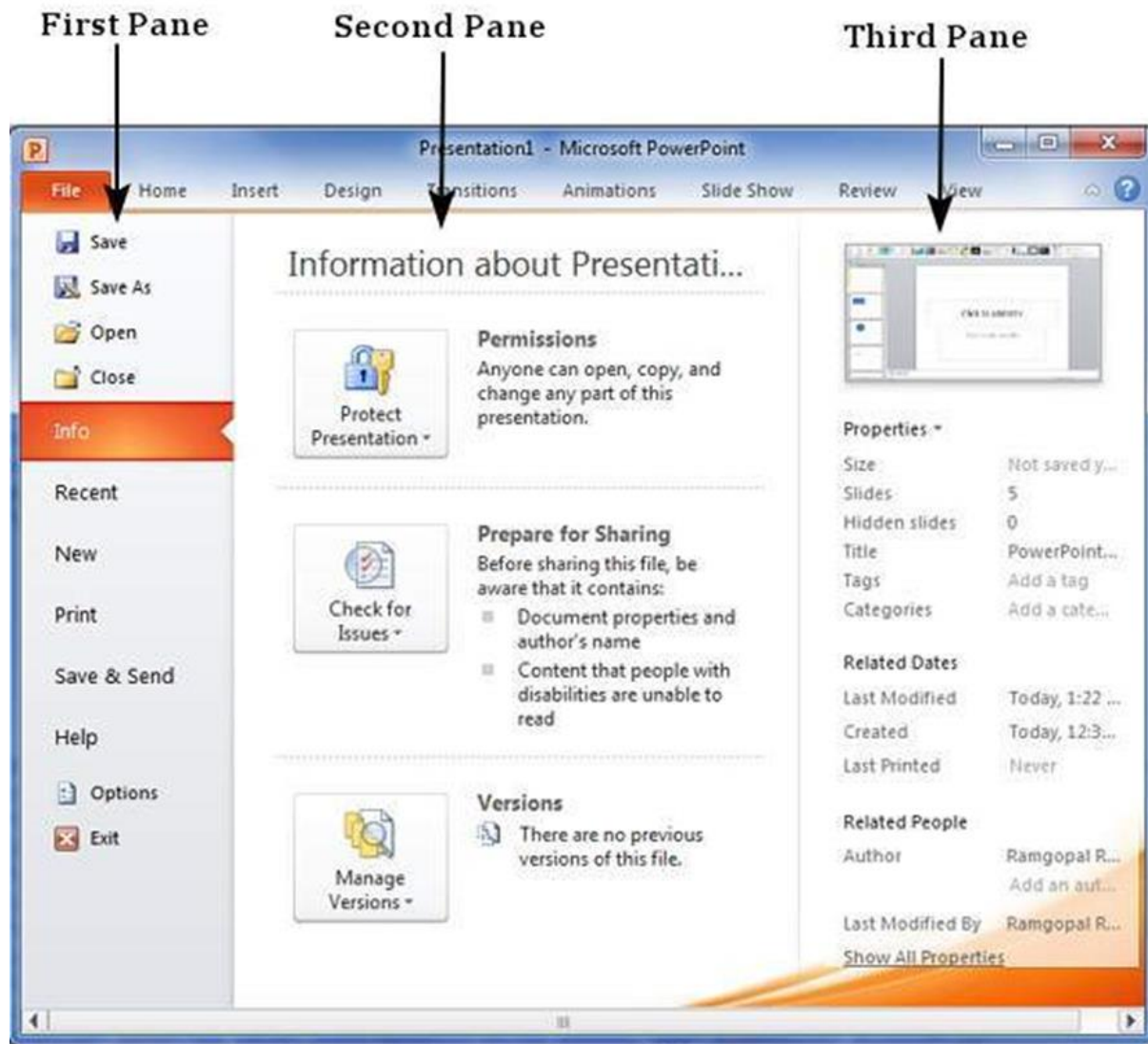
### Accessing Backstage View

You can access the Backstage view simply by clicking on the File tab. You can exit this view by clicking on any tab (including the File tab again). You can also press the '**Esc**' button on the keyboard.



## Organization of Backstage View

The backstage view has three sections or panes.



- **First Pane:** This is the commands pane which consists of all the commands you would typically find in the file menu of older versions. You also have the **Options** menu which lets you edit the options on the program like customizing the ribbon.

Various commands under the first pane are described in the table below:

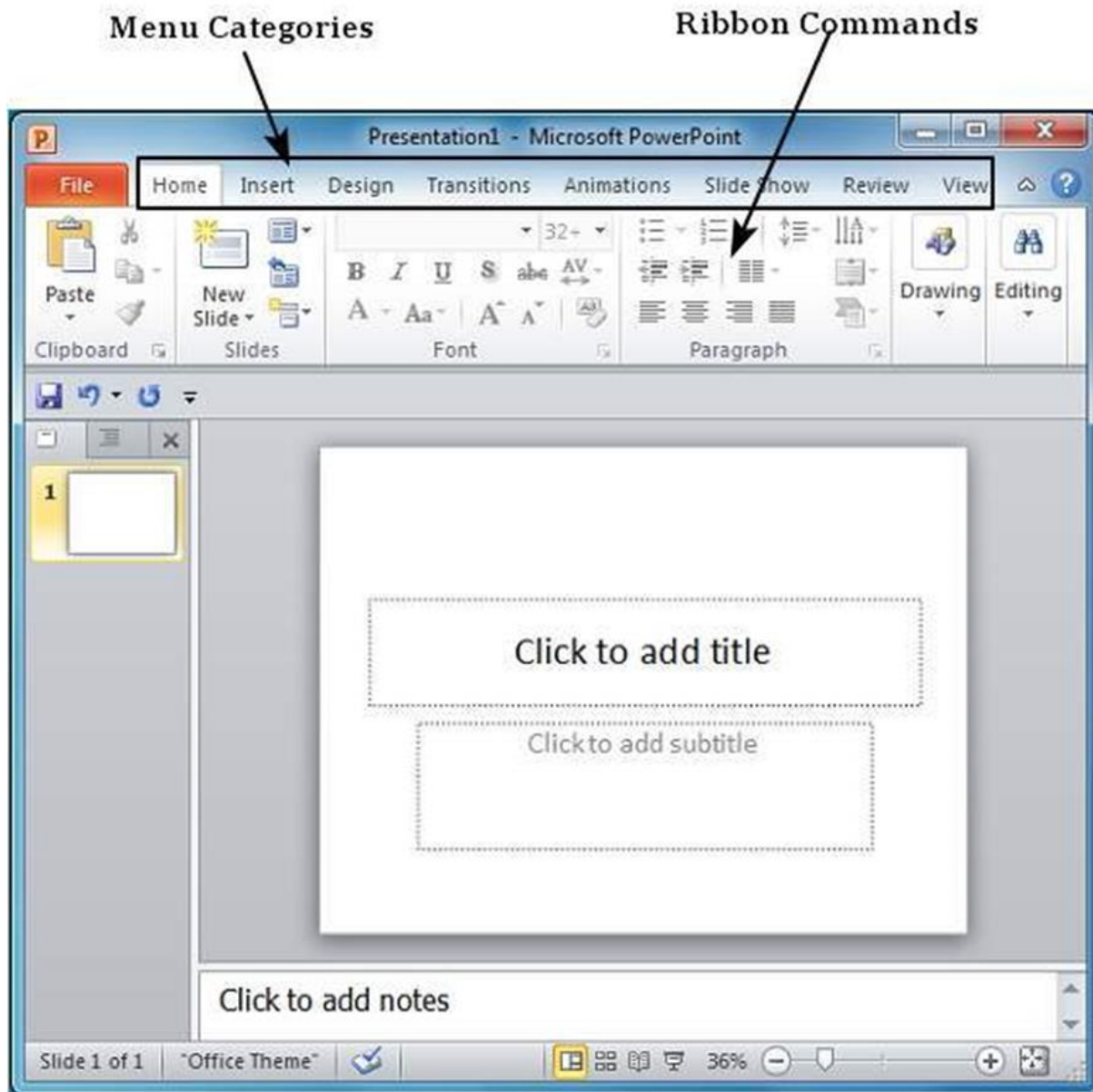
Command	Description
Save	This allows you to save a new file or an existing file in standard format. If you are working on a previously saved file this will save the new changes in the same file format. If

	you are working on a new file, this command would be similar to the Save As command.
Save As	Allows you to specify the file name and the file type before saving the file.
Open	Allows you to open new PowerPoint files.
Close	Allows you to close an existing file.
Info	Displays the information about the current file.
Recent	Lists series of recently viewed or edited PowerPoint files.
New	Allows you to create a new file using blank or pre-defined templates.
Print	Allows you to select the printer settings and print the presentation.
Save & Send	Allows you to share your presentation with larger audience via emails, web, cloud services, etc.
Help	Provides access to PowerPoint Help.
Options	Allows you to set various options related to PowerPoint program.
Exit	Closes the presentation and exits the program.

- **Second Pane:** This is the subcommands pane. This will list all the commands related to the main command you choose in the first pane. For example, if you select Print in the first pane, you get to choose the printer and adjust the print settings in the second pane.
- **Third Pane:** This is the preview or file information page. Depending on the command and the subcommand you select, this pane will either display the properties of the file or give you a preview of the file.

## 4. PowerPoint 2010 – Creating Presentation

PowerPoint offers a host of tools that will aid you in creating a presentation. These tools are organized logically into various ribbons in PowerPoint. The table below describes the various commands you can access from the different menus.





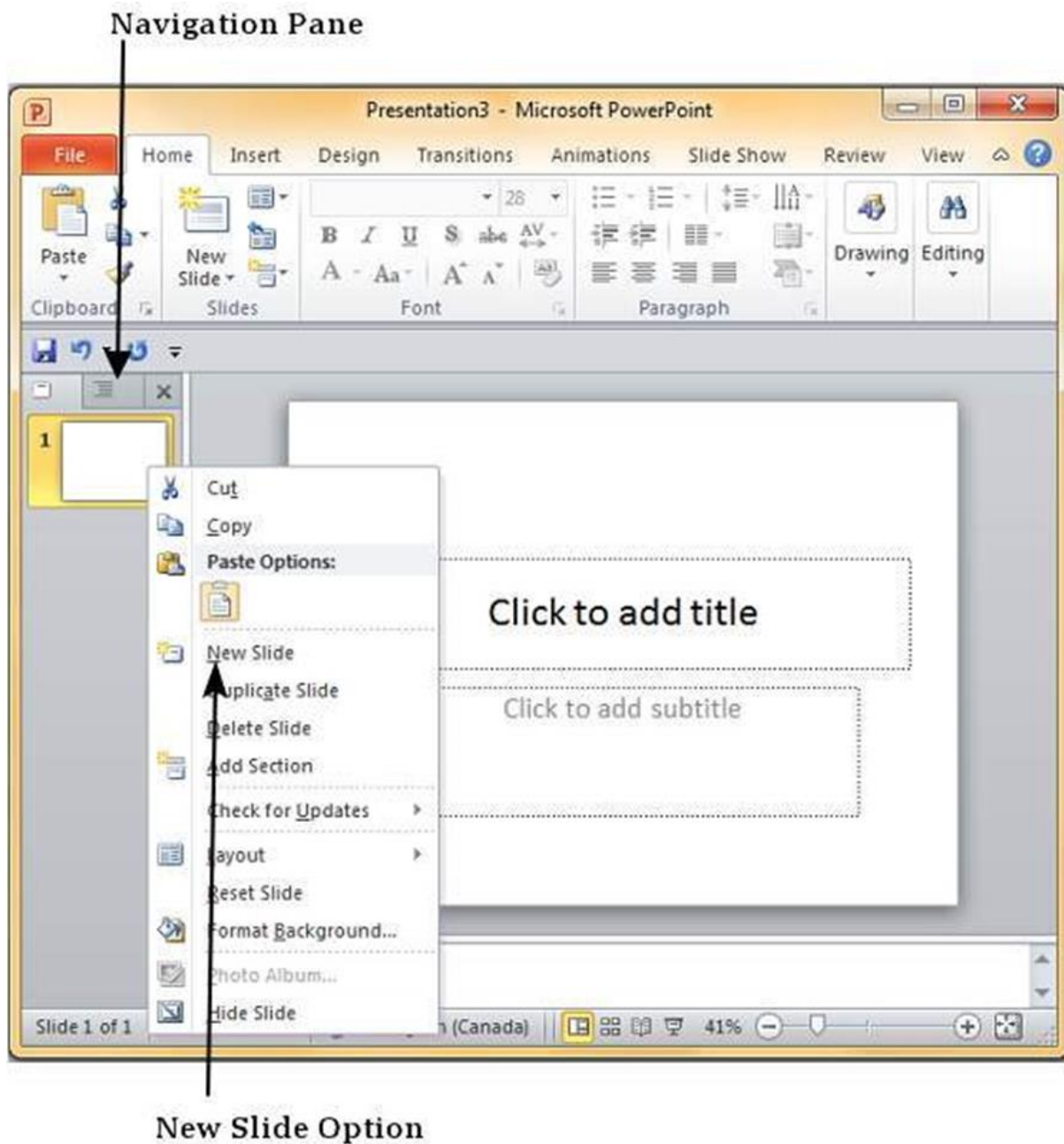
<b>Menu Category</b>	<b>Ribbon Commands</b>
Home	Clipboard functions, manipulating slides, fonts, paragraph settings, drawing objects and editing functions
Insert	Insert tables, pictures, images, shapes, charts, special texts, multimedia and symbols
Design	Slide setup, slide orientation, presentation themes and background
Transitions	Commands related to slide transitions
Animations	Commands related to animation within the individual slides
Slideshow	Commands related to slideshow set up and previews
Review	Proofing content, language selection, comments and comparing presentations
View	Commands related to presentation views, Master slides, color settings and window arrangements

Besides these depending on the objects selected in the slide, there are other menu tabs that get enabled.

# 5. PowerPoint 2010 – Adding New Slides

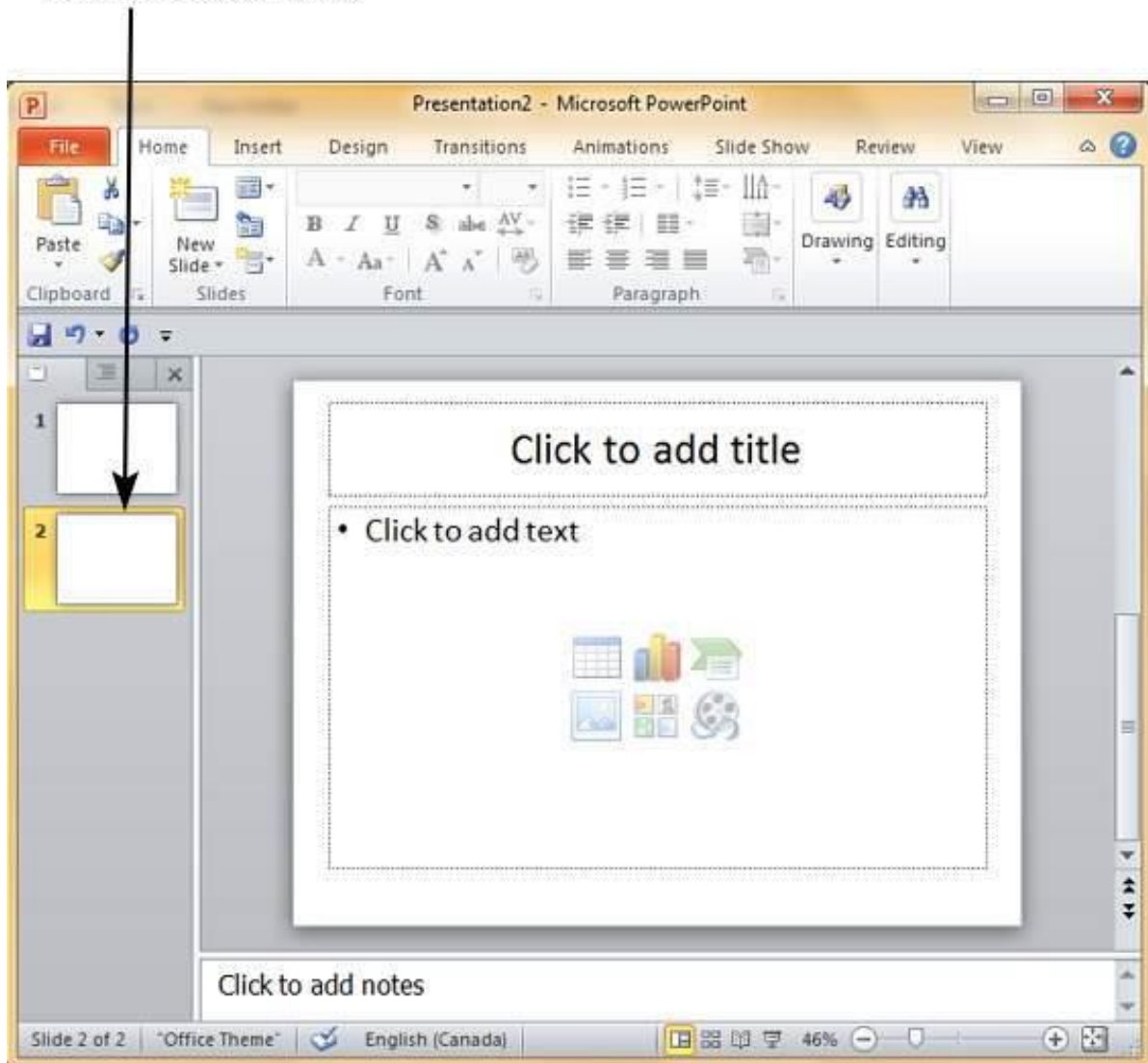
In this chapter, we will understand how to add new slides in an existing presentation. Here are the steps that allow you to insert a new slide in the deck:

**Step 1:** Right-click in the **Navigation Pane** under any existing slide and click on the **New Slide** option.



**Step 2:** The new slide is inserted. You can now change the layout of this slide to suit your design requirements.

### New Slide Inserted

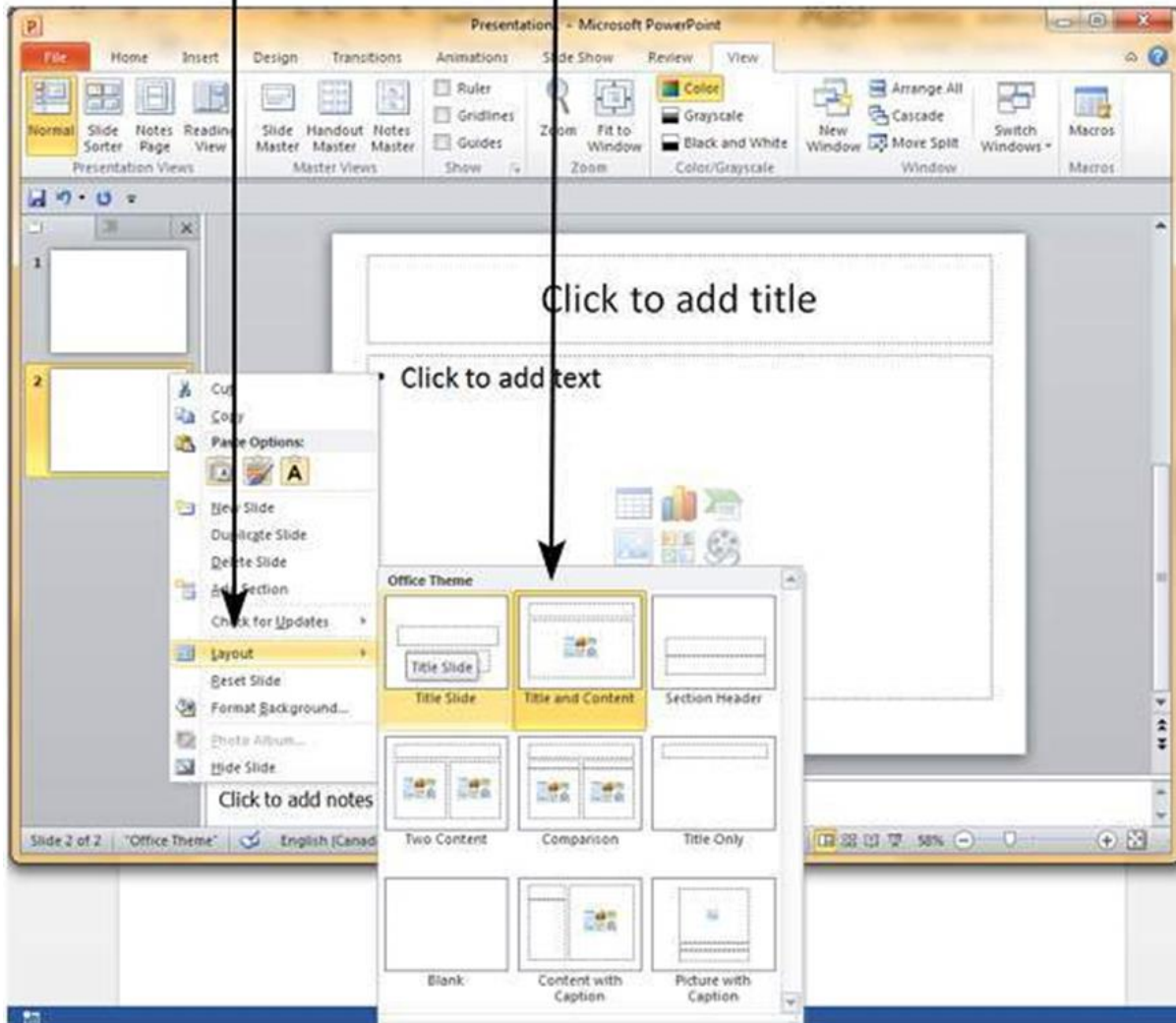


**Step 3:** To change the slide layout, right-click on the newly inserted slide and go to the **Layout** option where you can choose from the existing layout styles available to you.



## Layout Menu Option

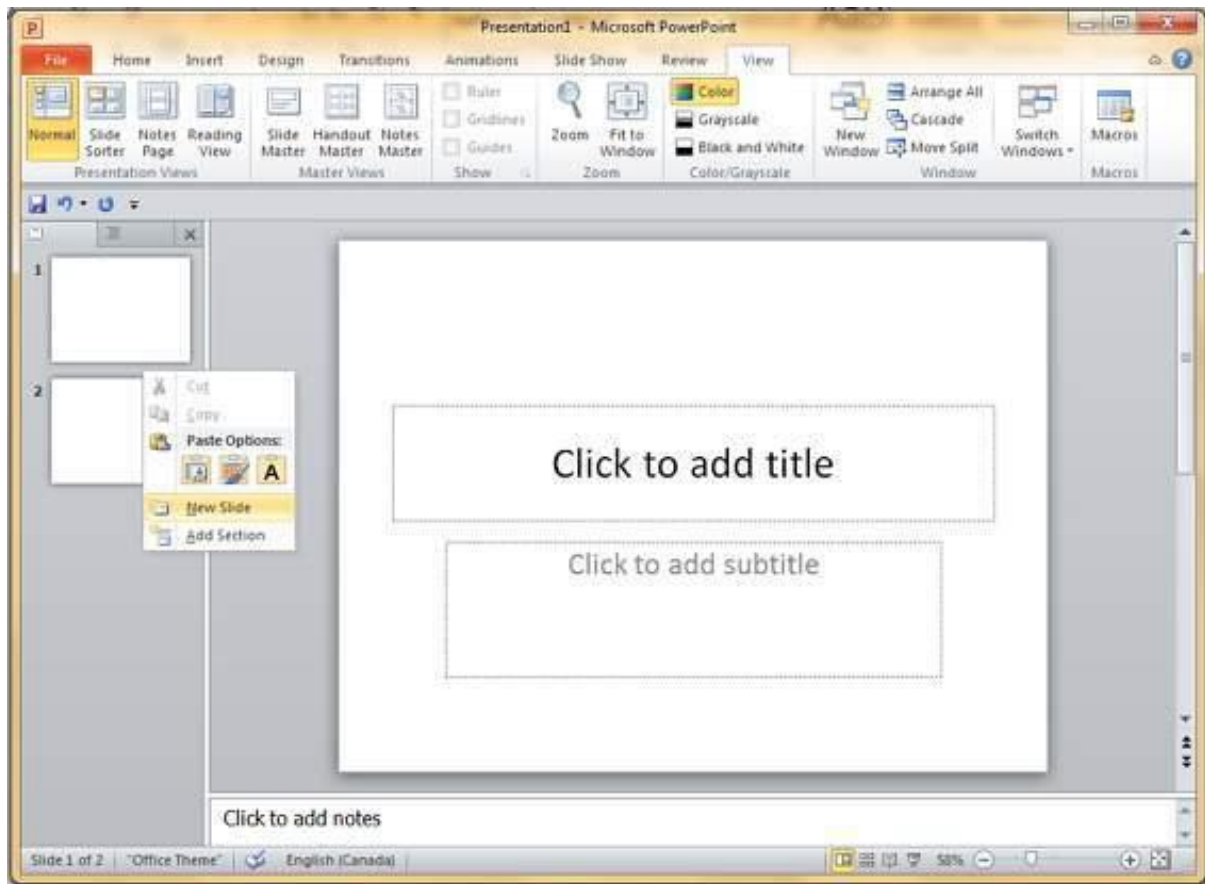
## Slide Layout Styles



You can follow the same steps to insert a new slide in between existing slides or at the end on the slide list.

When we insert a new slide, it inherits the layout of its previous slide with one exception. If you are inserting a new slide after the first slide (**Title** slide), the subsequent slide will have the **Title and Content** layout.

You will also notice that if you right-click in the first step without selecting any slide the menu options you get are different, although you can insert a new slide from this menu too.



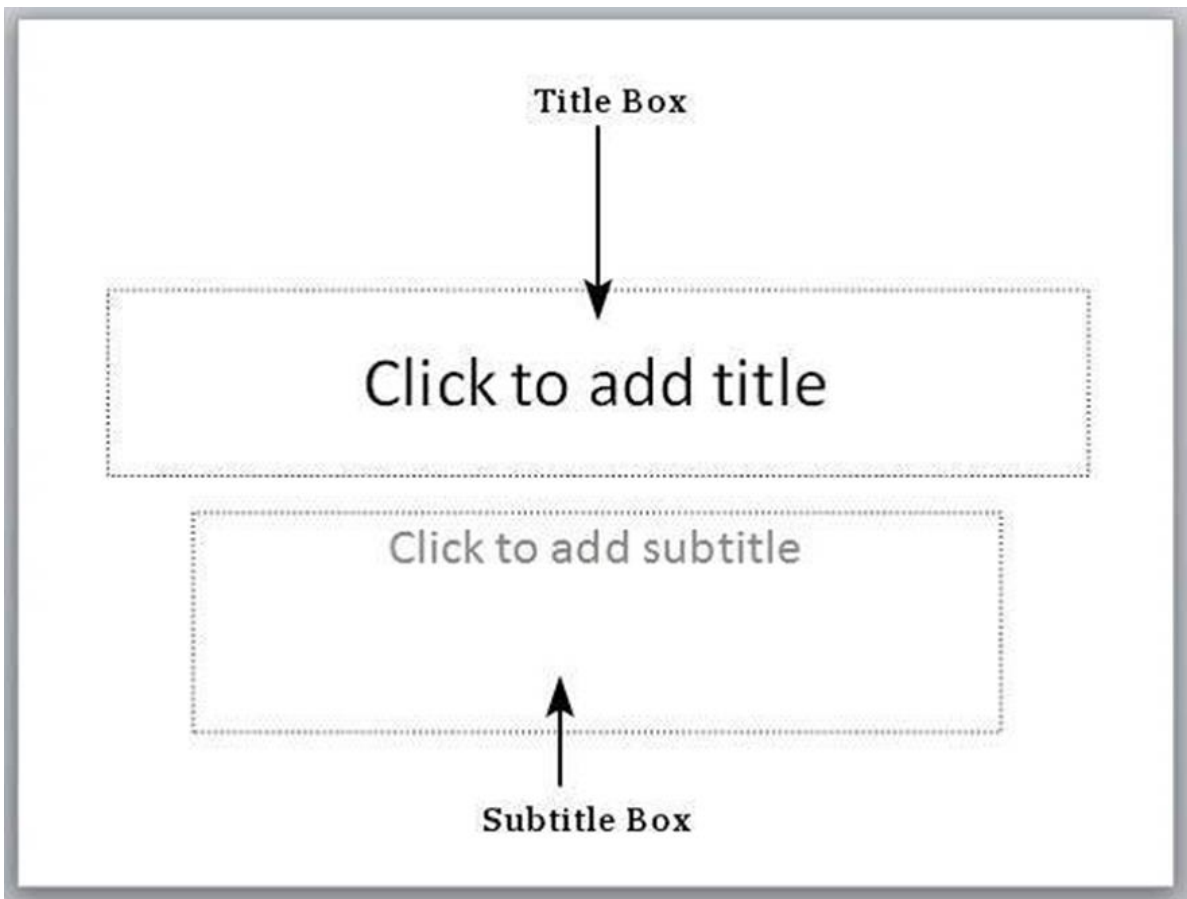
## 6. PowerPoint 2010 – Adding Text in Boxes

PowerPoint allows users to add text to the slide in a well-defined manner to ensure the content is well distributed and easy to read. The procedure to add the text in a PowerPoint slide is always the same - just click in the text box and start typing. The text will follow the default formatting set for the text box, although this formatting can be changed later as required. What changes is the different kinds of content boxes that support text in a PowerPoint slide.

Given below are some of the most common content blocks you will see in PowerPoint.

### Title Box

This is typically found on slides with the title layout and in all the slides that have a title box in them. This box is indicated by "**Click to add title**".

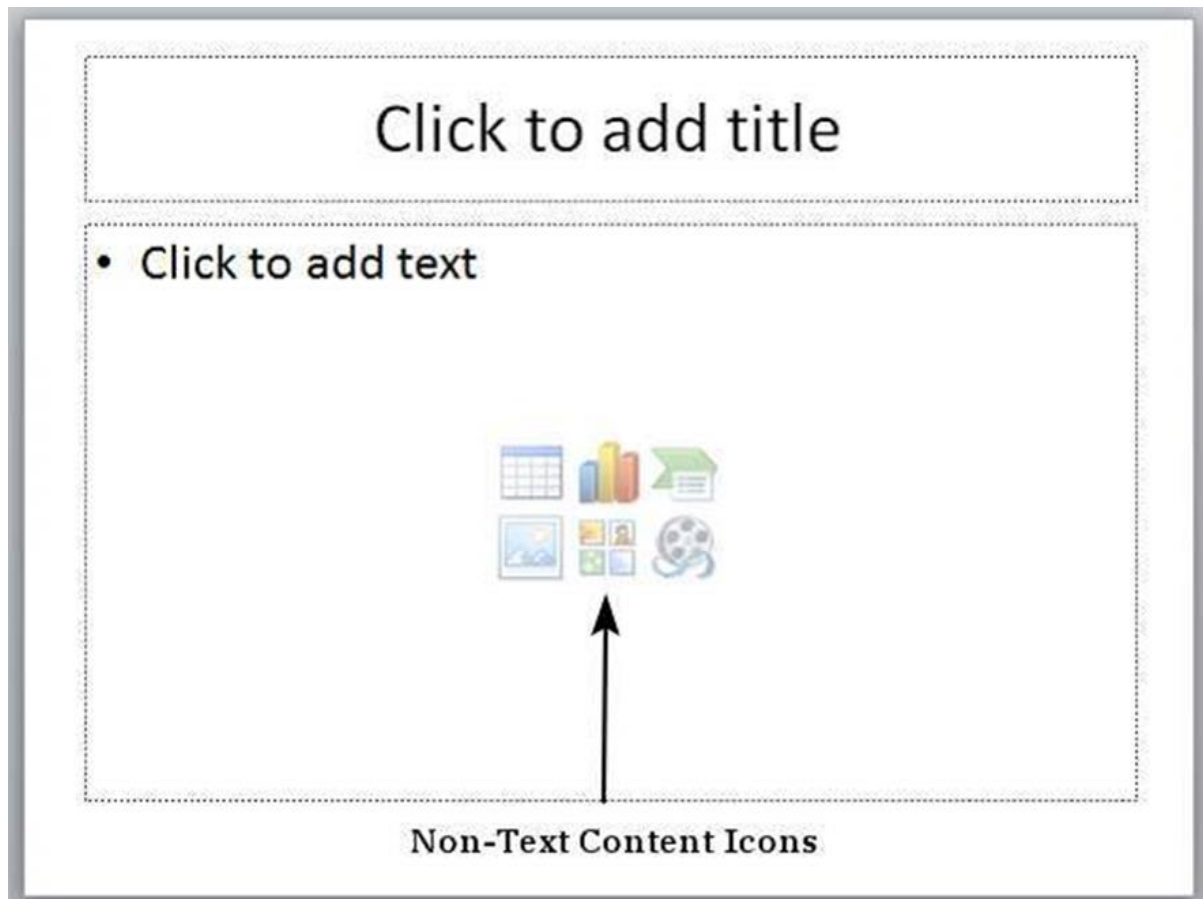


## Subtitle Box

This is found only in slides with the **Title** layout. This is indicated by "**Click to add subtitle**".

## Content Box

This is found in most of the slides that have a placeholder for adding content. This is indicated by "**Click to add text**". As you can see, this box allows you to add text as well as non-text content. To add text to such a box, click anywhere on the box, except on one of the content icons in the center and start typing.





## Text Only Box

This is not a default content box available in PowerPoint, but you can create it using Slide Master, if required. This is also indicated by "**Click to add text**". The only difference between the **Text Only Box** and the **Content Box** is that the former only supports text in the content area.

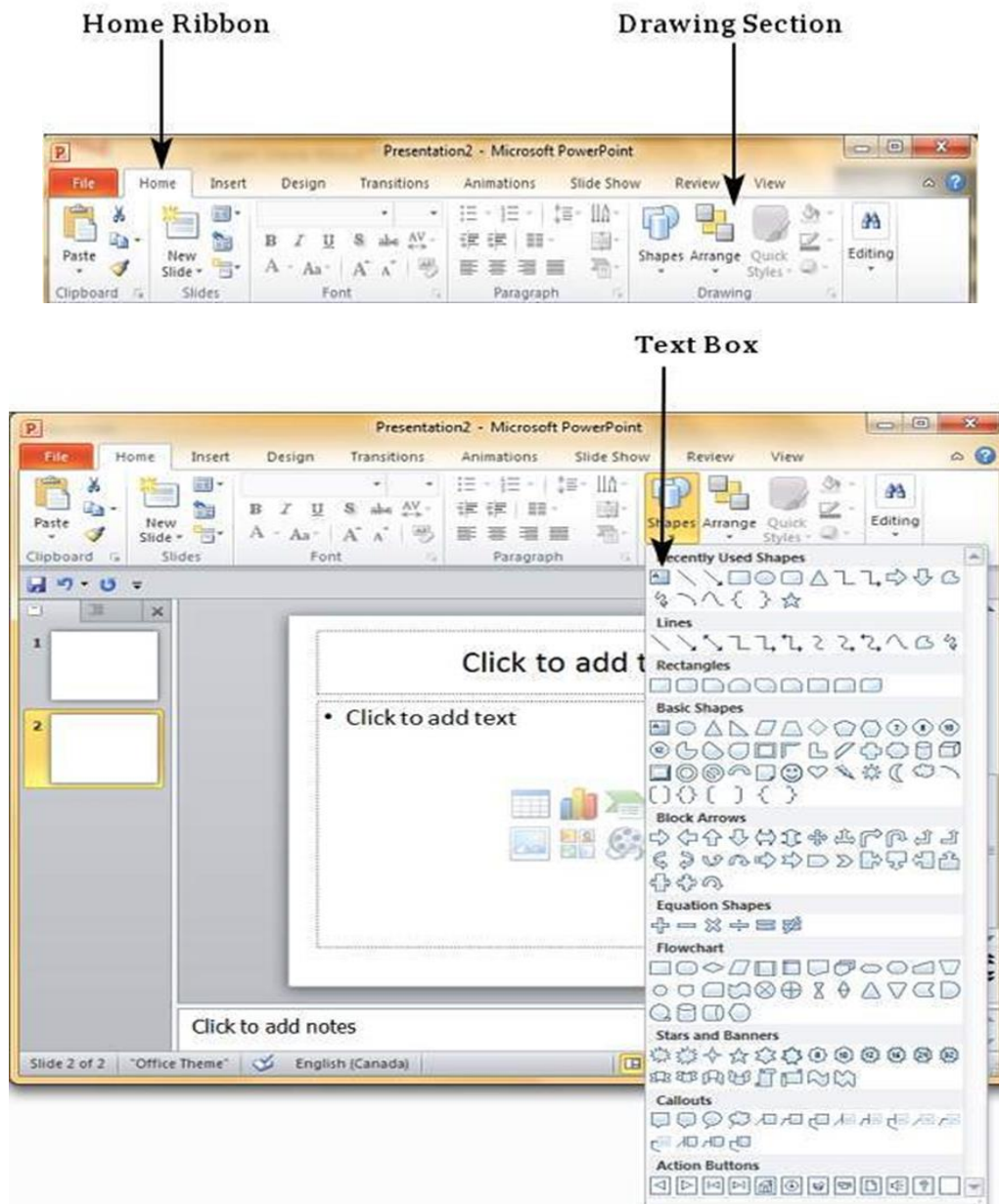




# 7. PowerPoint 2010 – Adding New Text Boxes

This chapter will teach you how to add new text boxes in a slide. Most of the standard layouts come with the text box option. As mentioned in the previous chapter, text boxes will have "**Click to add text**" as the default text. Here are the steps to add new text boxes in slide.

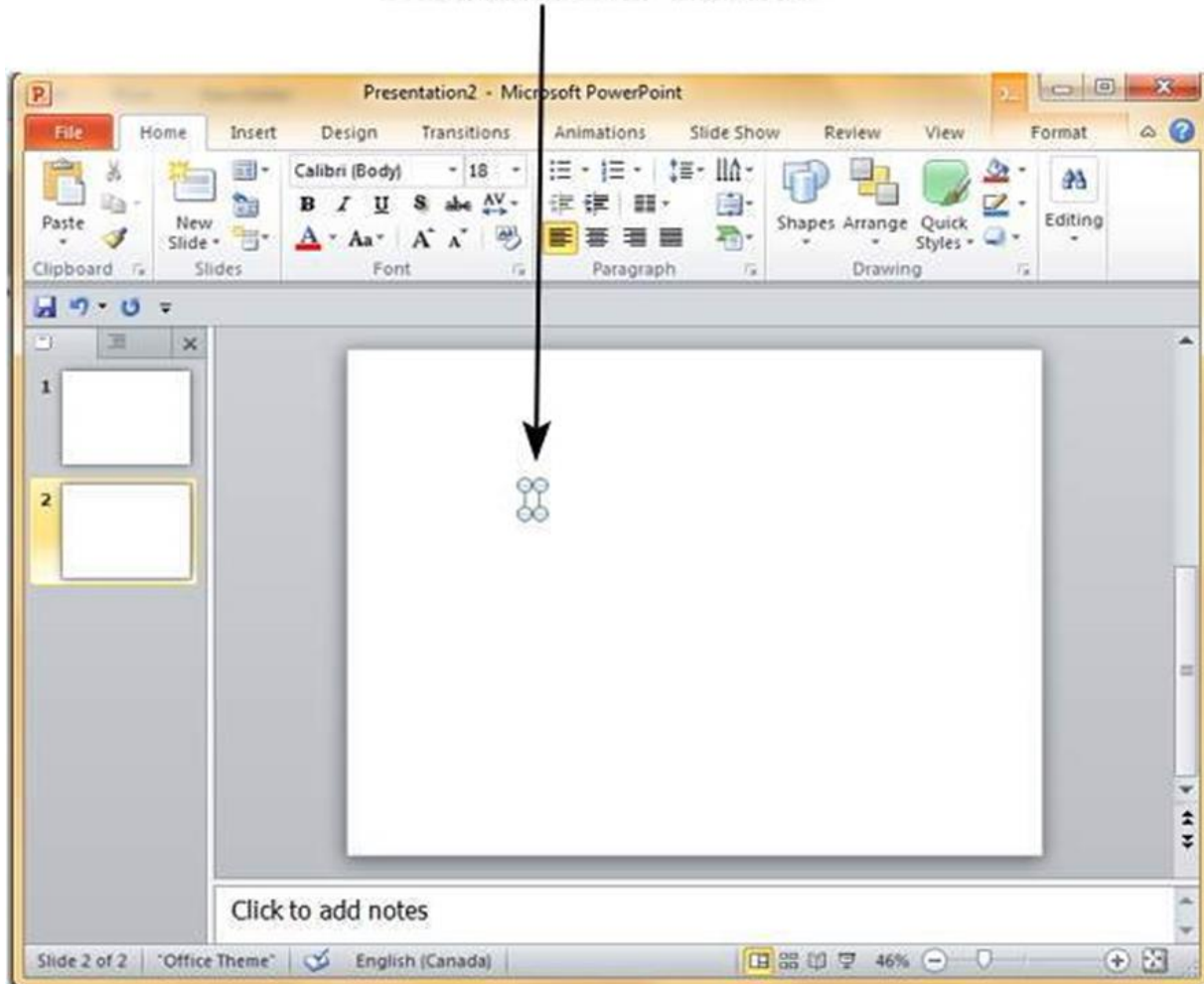
**Step 1:** Click on the **Text Box** icon in the **Home** ribbon under the **Drawing** section.

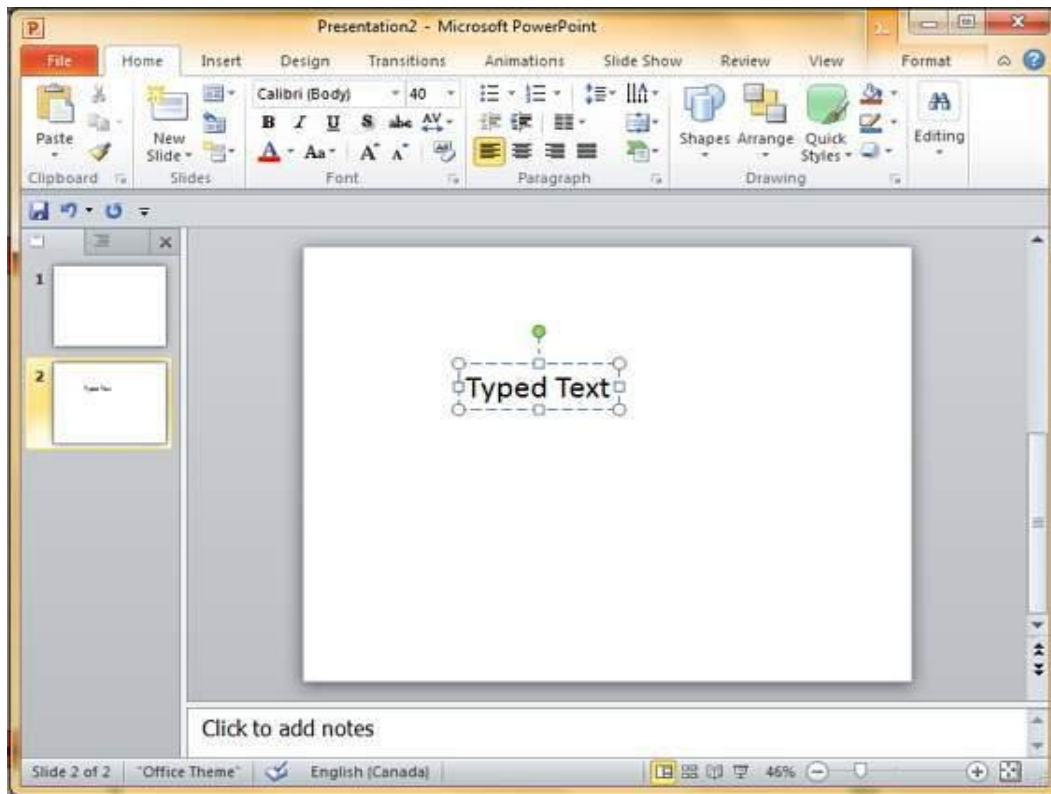


**Step 2:** You will get the insert text box cursor that looks like an inverted cross.

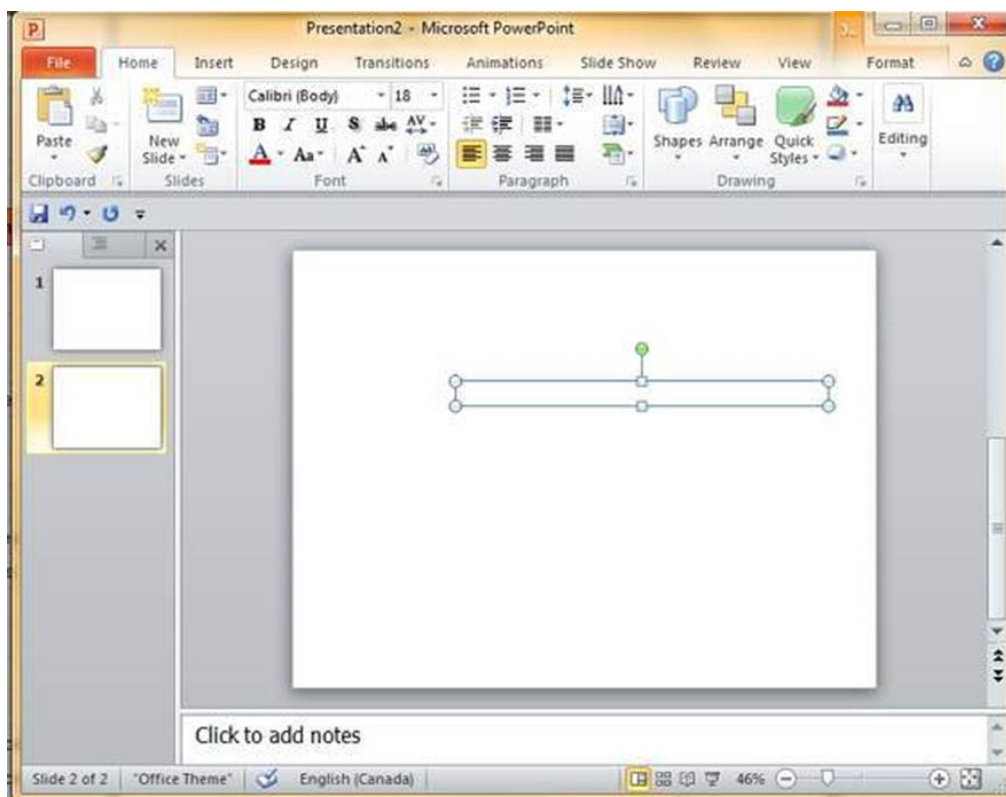
**Step 3:** Click to insert a text box. You can now start typing directly into the text box.

### Newly Inserted Text Box

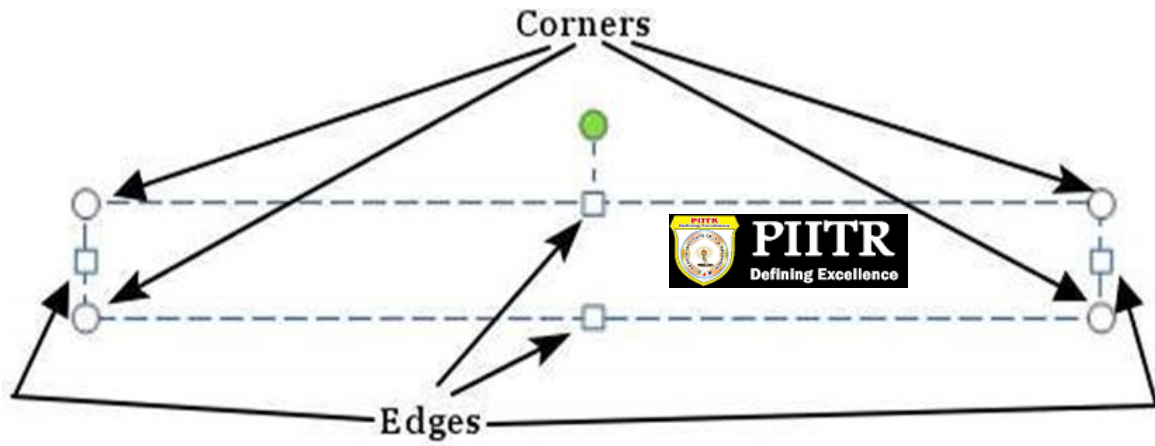




**Step 4:** Alternately, you can click and drag the cursor without releasing the click to create a text box.



The size of the text box can be adjusted by selecting one of the edges marked by squares or corners marked by circles.

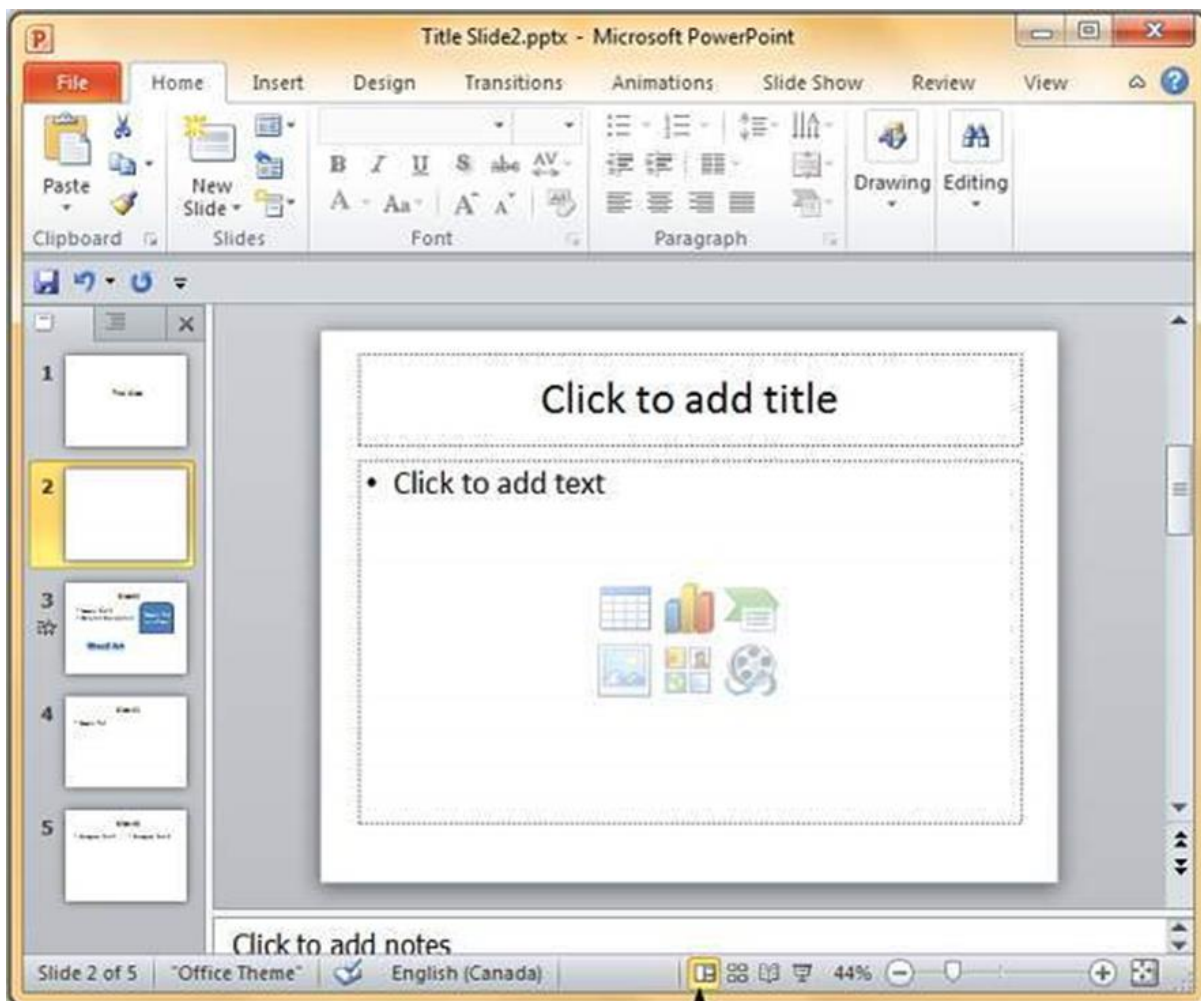


# 8. PowerPoint 2010 – Deleting Existing Slide

There are times while building a slide deck, you may need to delete some slides. This can be done easily from PowerPoint. You can delete the slides from the **Normal** view as well as the **Slide Sorter** view. In each view, you can delete the slides in two ways.

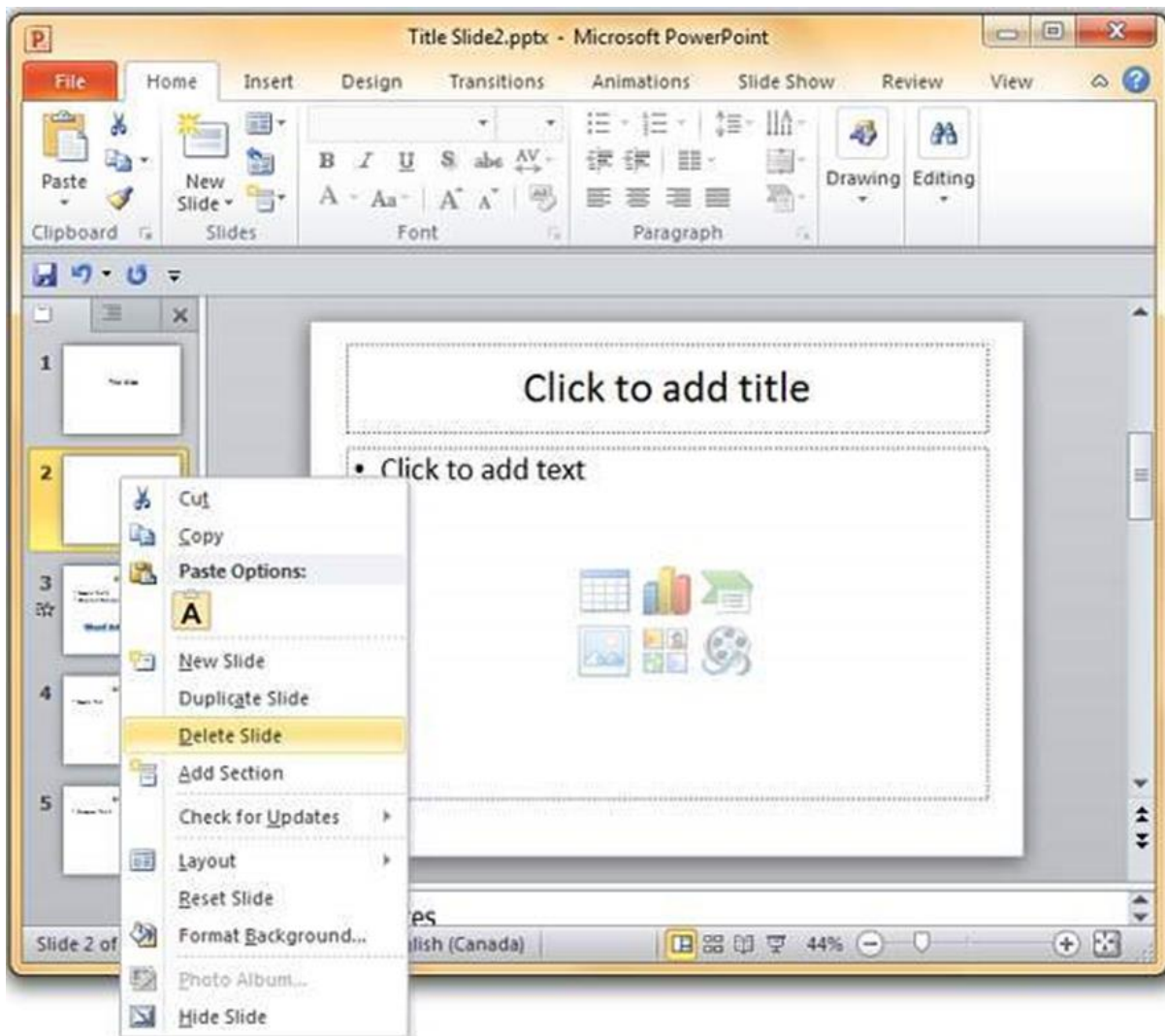
## Deleting from Normal View

**Step 1:** Go to the Normal view.



Normal View icon

**Step 2:** Right-click on the slide to be deleted and select the **Delete Slide** option.

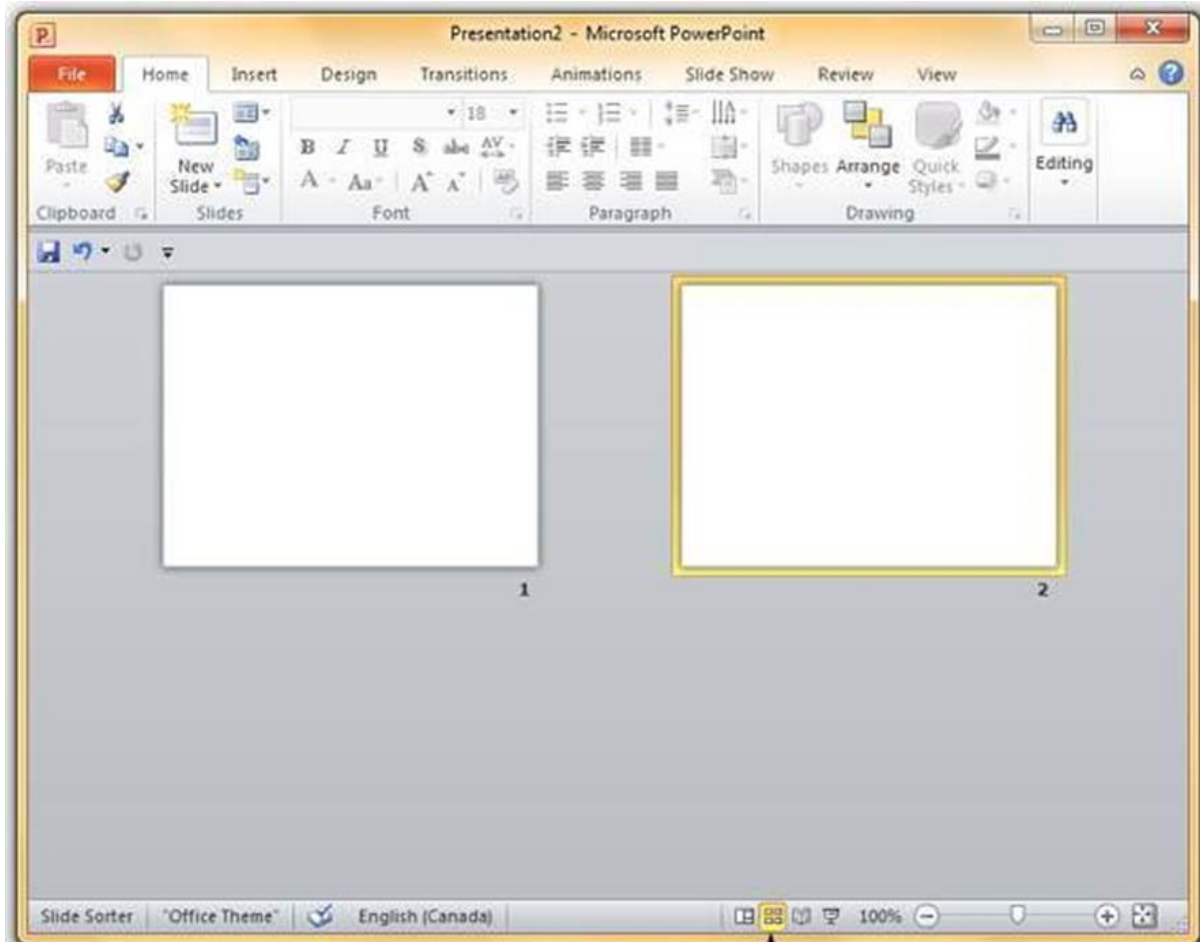


Alternately, you can select the slide and press the **Delete** button on your key board.

## Deleting from Slide Sorter View

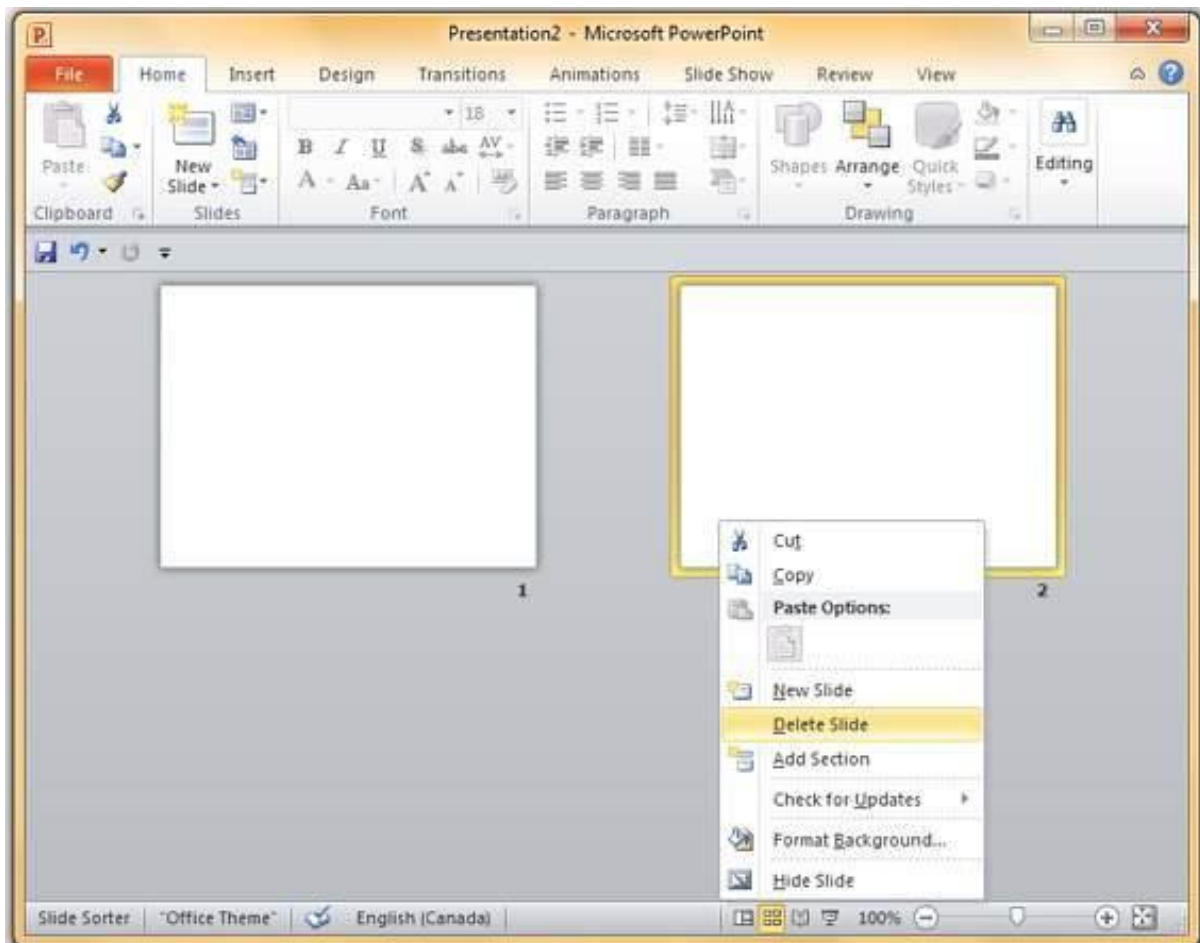
Let us now understand how to deleted slides from the Slide Sorter View.

**Step 1:** Go to the Slide Sorter view.



Slide Sorter View icon

**Step 2:** Right-click on the slide to be deleted and select the **Delete Slide** option.



Alternately, you can select the slide and press the **Delete** button on your key board.



# 9. PowerPoint 2010 – Rearranging Slides

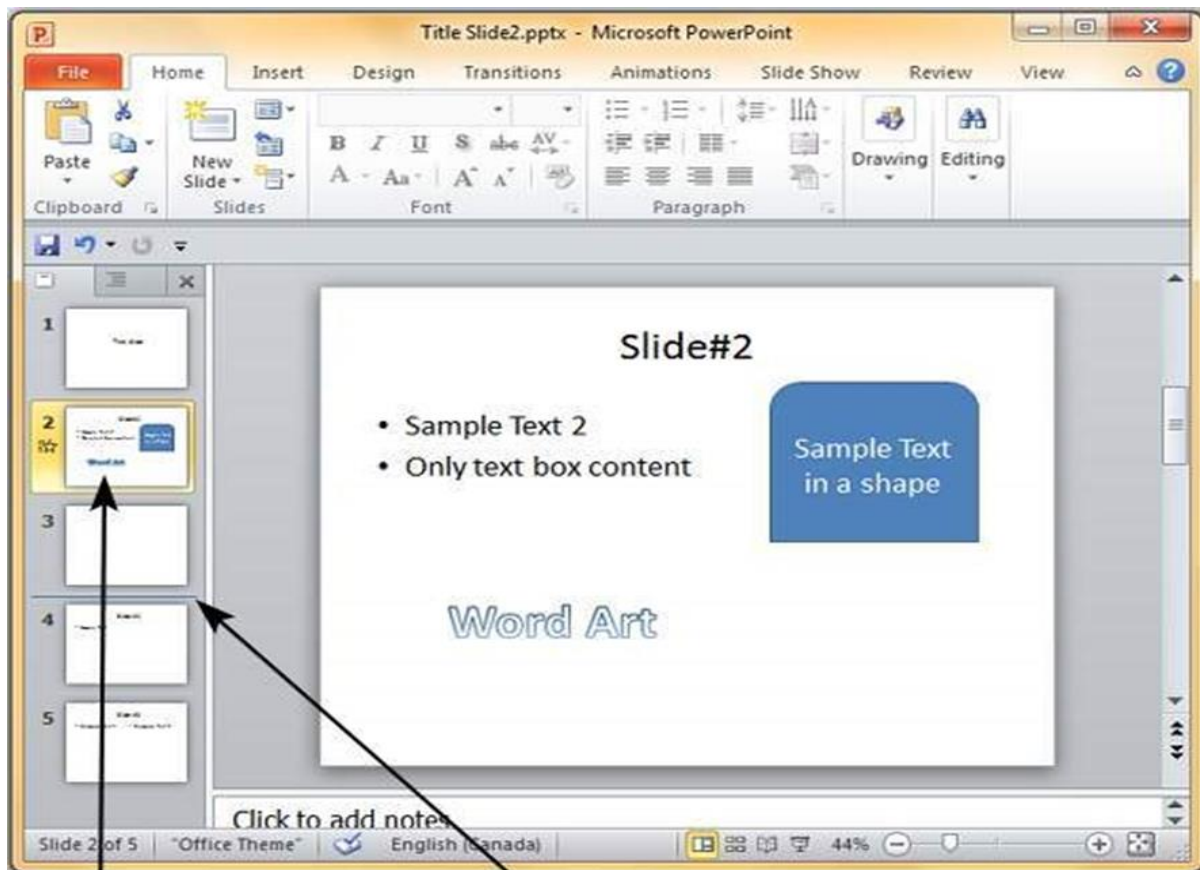
Rearranging slides is important when it comes to organizing the overall presentation flow. While it is vital that you get the right content in every slide, it is equally important that you are able to present them in a format that makes it easier for the audience to understand the content too; most times this will require rearranging the slides.

You can rearrange slides from two views in PowerPoint - **Normal View** and **Slide Sorter View**. Given below are the steps to rearrange slides from different views.

## Normal View

**Step 1:** Select the slide to be moved

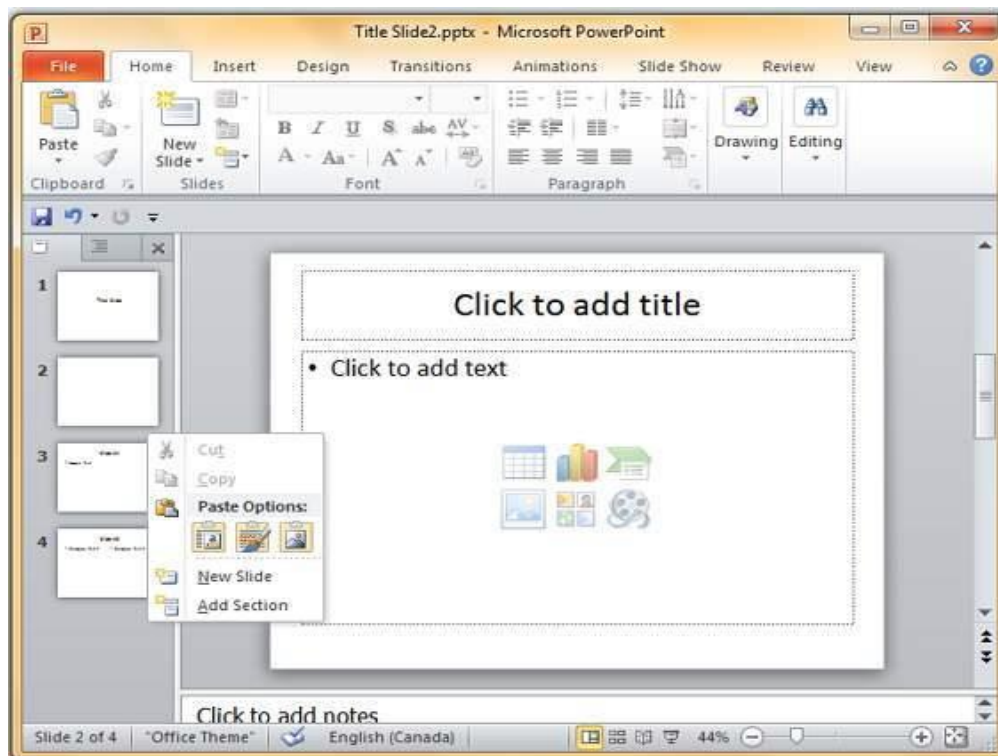
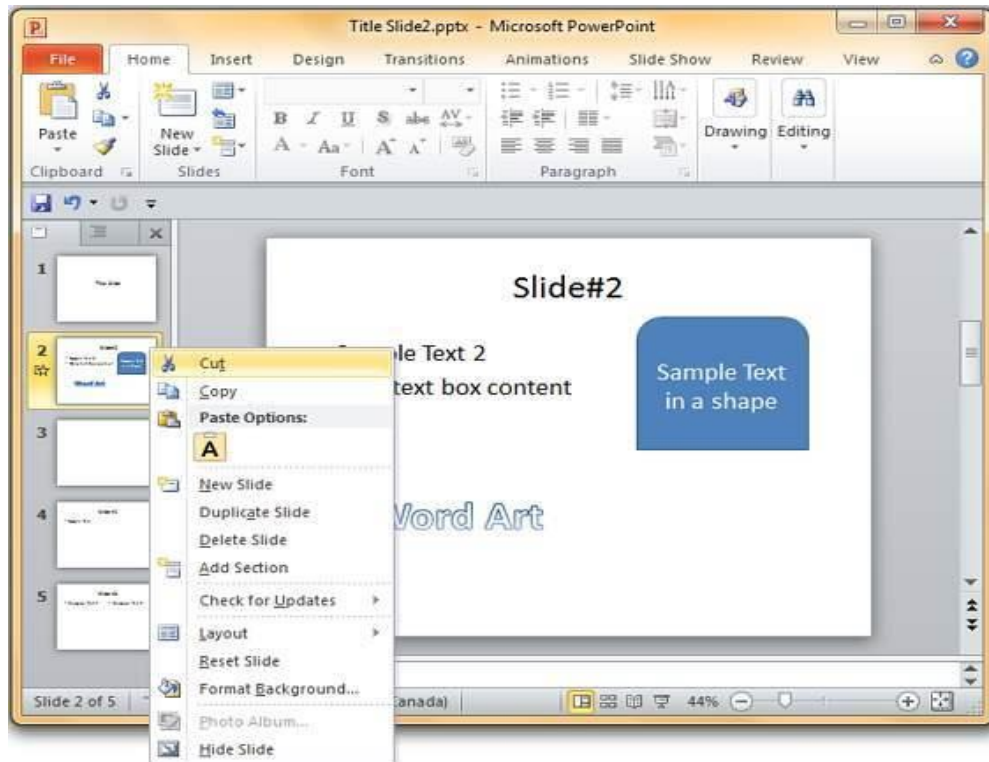
**Step 2:** Left click on the slide and drag it to the position in the sequence where you want to place it. PowerPoint will indicate the insert position with a line in-between existing slides.



Selected Slide

Insert Position

**Step 3:** When you get to the right position release the left click button to insert the slide. Alternately you can also cut the selected slide and paste it back in the sequence as shown below.



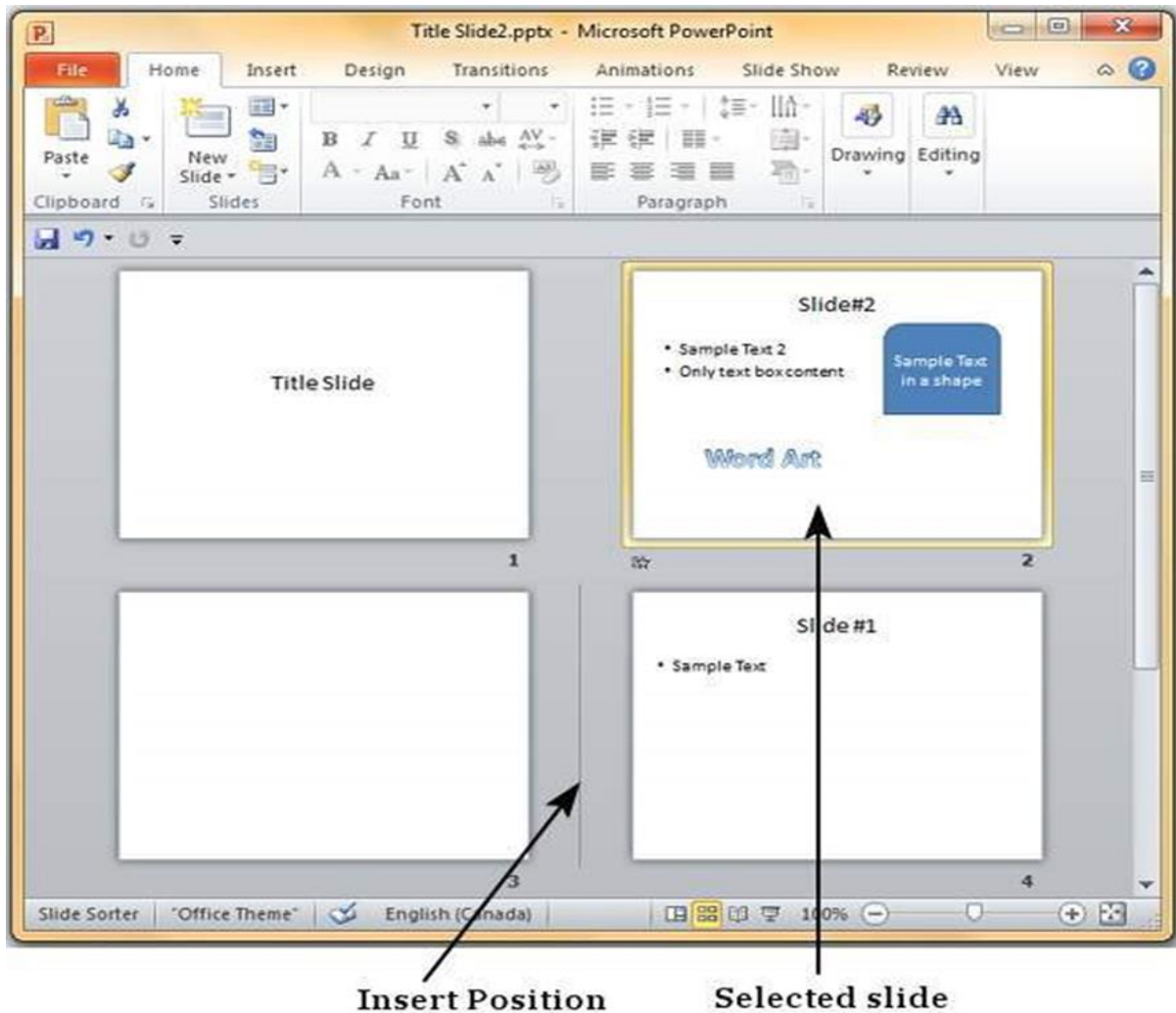


## Slide Sorter View

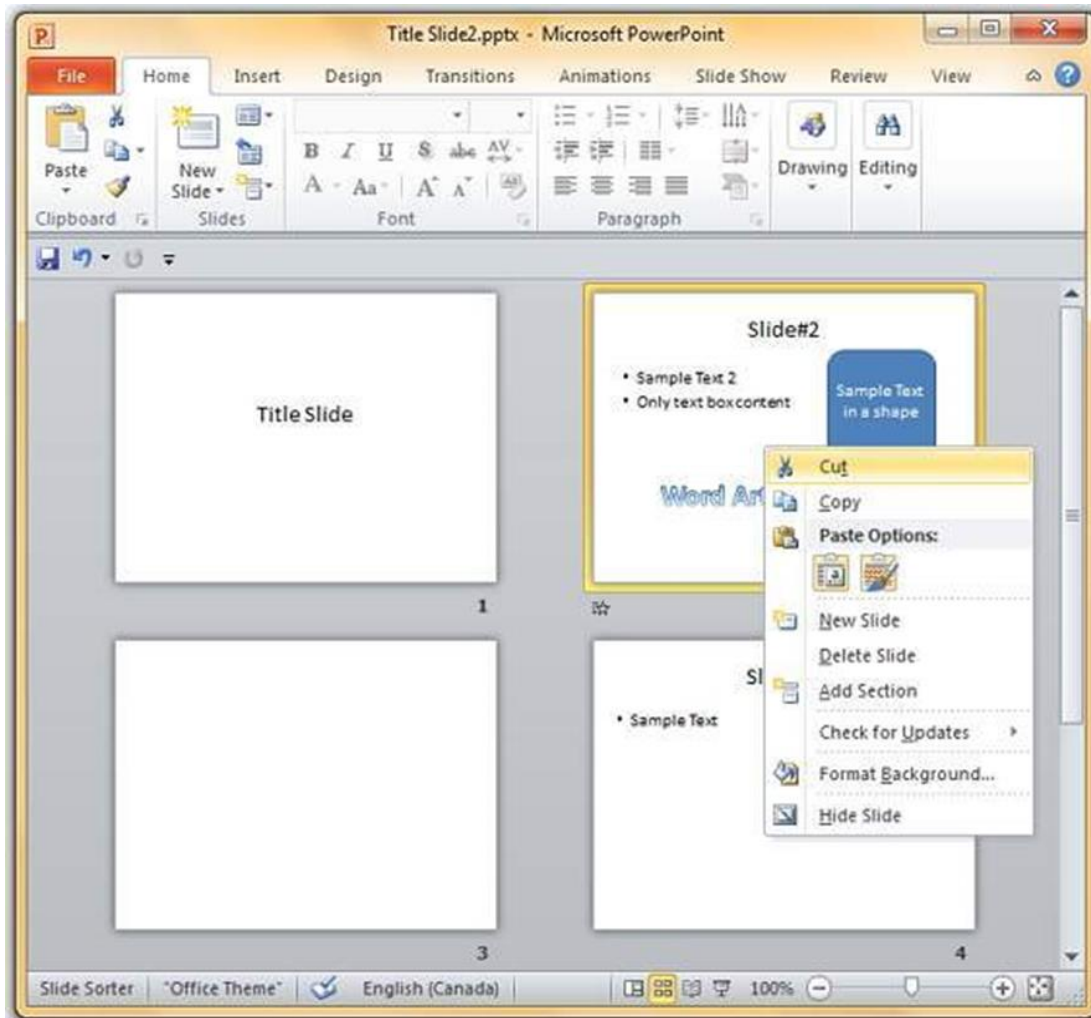
Let us now understand how the Slide Sorter View works.

**Step 1:** Select the slide to be moved.

**Step 2:** Left click on the slide and drag it to the position in the sequence where you want to place it. PowerPoint will indicate the insert position with a line in-between existing slides.



**Step 3:** When you get to the right position, release the left click button to insert the slide. Alternately you can also cut the selected slide and paste it back in the sequence as shown below.



प्रज्ञा इंस्टीट्यूट ऑफ आईटी & रिसर्च आप सभी को हार्दिक धन्यवाद देता है। हम आशा करते हैं की आपको जो डिजिटल बूक आपको दिया गया है उससे आप काफी ज्ञान अर्जित किया होगा और काफी कुछ सीखने का मिला होगा। हम आपके उज्वल भविष्य की कामना करते हैं।

